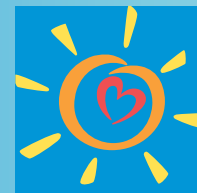


# CPT<sup>®</sup> Category II

## Coding Tip Sheet



**L.A. Care**  
HEALTH PLAN<sup>®</sup>

### What are CPT Category II codes?

Current Procedural Terminology (CPT) Category II codes were developed by the American Medical Association (AMA) as a supplemental performance tracking set of procedural codes in addition to the Category I and III coding sets.

- Category I codes are used for tracking and billing for common procedures.
- Category III codes are temporary codes for emerging technology.
- Category II codes are optional and intended to be used for measuring performance on quality metrics such as Healthcare Effectiveness Data and Information Set (HEDIS<sup>®</sup>), Uniform Data System (UDS), and Physician Quality Reporting System (PQRS).
  - Category II codes are alphanumeric and consist of four digits followed by the letter 'F.'
  - Category II codes are not billing codes; they are used to track services on claims for performance measurement.
  - Category II codes are not to be used as a substitute for Category I codes.

### What is the purpose of CPT Category II codes?

Category II codes are intended to facilitate the collection of information about the quality of care delivered by coding a number of services or test results that support performance measures. L.A. Care Health Plan highly encourages clinical office staff and billers to use CPT Category II codes. It is anticipated that the use of Category II codes for performance measurement will decrease the need for record abstraction and chart review, thereby, minimizing the administrative burden on physicians and other health care professionals seeking to measure the quality of their patient care.

### CPT Category II codes are arranged according to the following categories:

Category	Code Range	Category	Code Range
Composite measures	0001F - 0015F	Therapeutic, preventive or other interventions	4000F - 4306F
Patient management	0500F - 0575F	Follow-up or other outcomes	5005F - 5100F
Patient history	1000F - 1220F	Patient safety	6005F - 6045F
Physical examination	2000F - 2050F	Structural measures	7010F - 7025F
Diagnostic/screening processes or results	3006F - 3573F		

CPT II codes are released annually as part of the full CPT code set and are updated semi-annually in January and July by the AMA. The current listing of CPT II codes can be found on the AMA website at <http://www.ama-assn.org/ama/pub/physician-resources/solutions-managing-your-practice/coding-billing-insurance/cpt/about-cpt/category-ii-codes>. A list of most commonly used CPT II codes is provided on the following page.

Measure	Description	CPT II Codes
BMI Assessment	BMI assessed and documented	3008F*
Breast Cancer Screening	Screening mammography results documented and reviewed	3014F*
Care for Older Adults	Pain assessment	1125F, 1126F
	Advance Care planning	1157F, 1158F
	Medication list	1159F
	Medication review	1160F
	Functional status assessment	1170F
Cervical Cancer Screening	Pap test	3015F*
Colorectal Cancer Screening	Screening	3017F*
Comprehensive Diabetes Care	Diabetic retinal screening with eye care professional	2022F, 2024F, 2026F
	Diabetic retinal screening negative	3072F
	HbA1c level	3044F (<7.0), 3045F (7.0-9.0) 3046F (>9.0)
	Urine protein tests	3060F, 3061F, 3062F
	Nephropathy treatment	3066F, 4010F
	Systolic less than 140	3074F, 3075F
	Systolic greater than/equal to 140	3077F
	Diastolic less than 80	3078F
	Diastolic 80-89	3079F
	Diastolic greater than/equal to 90	3080F
Chronic Obstructive Pulmonary Disease (COPD)	Inhaled bronchodilator prescribed	4025F*
Depression Screening	Screening and follow-up	3725F*
Fall Risk Assessment	Assessment, plan of care	0518F, 1100F, 1101F
Medication Reconciliation Post-Discharge	Medication reconciliation	1111F
Metabolic Monitoring for Children and Adolescents on Antipsychotics   Cardiovascular Monitoring for People With Cardiovascular Disease and Schizophrenia   Diabetes Monitoring for People With Diabetes and Schizophrenia	HbA1c level	3044F (<7.0), 3045F (7.0-9.0) 3046F (>9.0)
	LDL-C tests	3048F, 3049F, 3050F
Persistent Asthma With Pharmacologic Treatment	Persistent asthma (mild, moderate or severe)	1038F, 4015F*
Pneumonia Vaccination Status for Older Adults	Pneumococcal vaccine administered or previously received	4040F*
Prenatal and Postpartum Care	Stand-alone prenatal visits	0500F, 0501F, 0502F
	Postpartum visits	0503F
Tobacco Use	Tobacco use assessed	1000F*
	Current tobacco smoker	1034F*
	Current smokeless tobacco user	1035F*
	Current tobacco non-user	1036F*
	Treatment, counseling	4000F*
	Pharmacologic treatment	4001F*
	Screening for tobacco use and cessation intervention	4004F*

\*Codes associated with the Uniform Data System (UDS) and/or Physician Quality Reporting System (PQRS) measure set. For any questions regarding CPT Category I, II, or III codes, please send an email to [HedisOps@lacare.org](mailto:HedisOps@lacare.org).