

Behavioral Health Services & Resources



L.A. Care
HEALTH PLAN®

For All of L.A.

October 20, 2021

Developmental Milestones for Patients - Aged 5 years & younger

Cathy Mechsner, Manager
Quality Improvement – Practice Transformation

Early Identification & Intervention (EII) Status

CALIFORNIA RANKS
43rd for screening
infants and toddlers



Toddlers ineligible for early intervention* can still benefit from other supports.

One-quarter of 2 year olds ineligible for early intervention* are not school ready.





How to improve care for the youngest patients?

Key Goals to Better Care for Our Youngest Members:

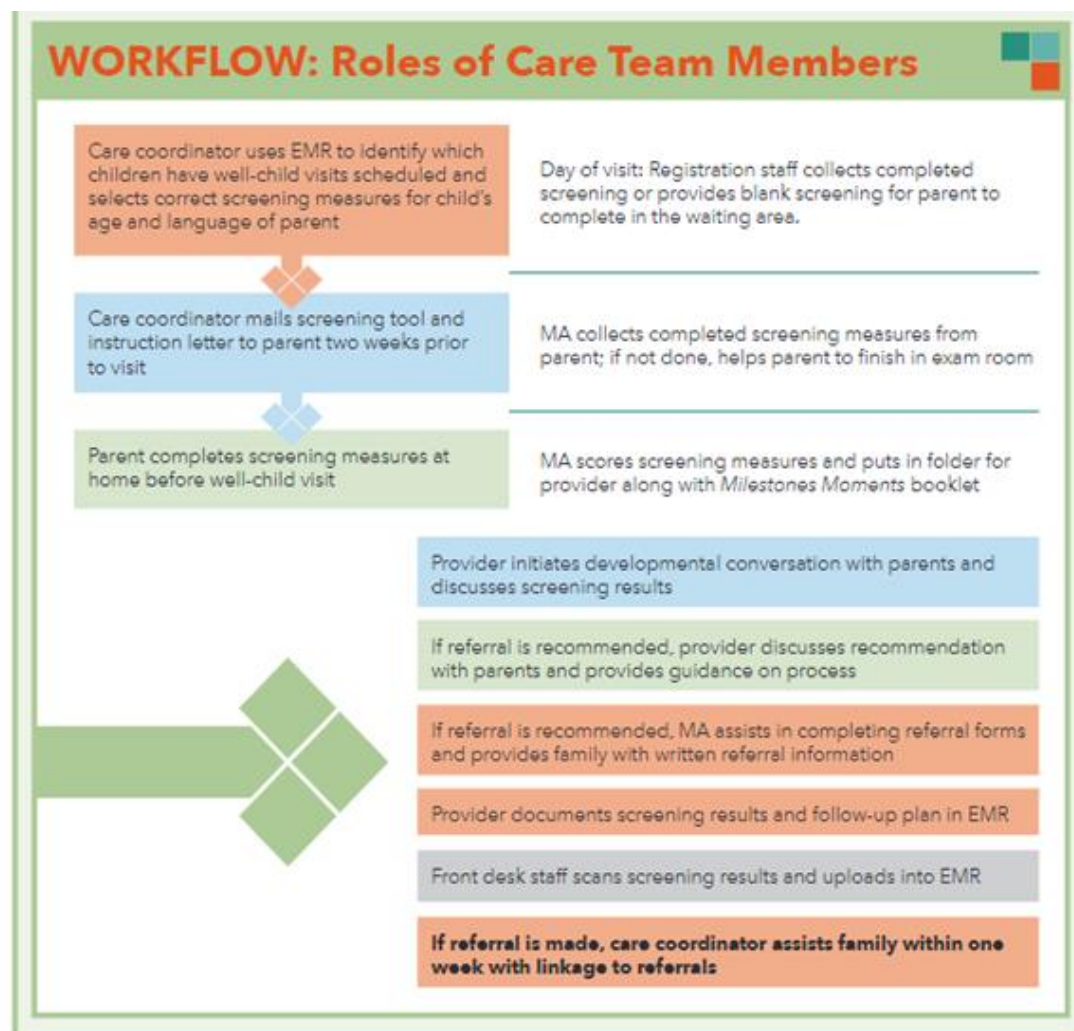
- Improve Early Identification & Intervention (EII) for developmental Milestones for LA County safety net children ages 0-5 years old
 - Increase **Provider** awareness and knowledge of:
 - Screening tools, referrals and workflow processes
 - Available agencies/organizations in the local community
 - Increase **Families/Caregivers'** awareness and knowledge of:
 - Developmental milestones and possible challenges
 - How to find available local resources in the community

How to improve care for the youngest patients?

What are the tools to use?

RECOMMENDED TOOLS FOR DEVELOPMENTAL SCREENING:				
	ASQ-3 Ages and Stages 3rd Edition brookspublishing.com/esq	PEDS Parents' Evaluation of Developmental Status PEDStest.com	M-CHAT Modified Checklist for Autism in Toddlers, Revised (M-CHAT-R) TM M-CHAT.org	 Proven Parent-Report Methodology. Research shows that parents are reliable reporters of their child's development. EASY TO USE AND SCORE
	Number of Questions	30 (6 each area)	10	
	Variety of Survey	21 age-based forms	Single form, all ages	
	Age Range	2 months-5 years	0-8 years	
	Parent Completion	10-20 minutes	5 minutes	
	Provider Score & Interpret Time	1-5 minutes	2 minutes	
	Languages	English, Spanish, French; ASQ PTI also available in Somali and Hmong	English, Spanish, Vietnamese; Others with license	
				Courtesy of First 5 Association

How to improve care for the youngest patients?



Prop. 56 Developmental Screenings

Implementation Date: January 1, 2020

Eligibility	Eligible Network Providers
Exclusions	Pre-paid Ambulatory Health Plans, Rady Childrens Hospital
What's reimbursed	Developmental Screenings provided in accordance with AAP/Bright Futures guidelines and when medically necessary to members that are not dual eligible for Medicare Part B
Payment type	Uniform dollar increase (specified code)

Service	Population	CPT Code	Payment
Developmental Screenings (APL 19-016)	Children up to age 30 months	96110 without modifier KX*	\$59.90

*Modifier KX indicates autism screening. If autism screening is provided within the same visit, each screening must be noted on separate claim lines to be paid for each screening.



Prop. 56 Developmental Screenings

Program Eligibility & Requirements

- Network Providers
 - FQHCs, CBRCs, IHCPs are eligible
- Must adhere to American Academy of Pediatrics/Bright Futures guidelines for visits:
 - 9-months (on or before 1st birthday)
 - 18-months (after 1st birthday and on or before 2nd birthday)
 - 30-months (after 2nd birthday and on or before 3rd birthday)
 - When medically necessary



Prop. 56 Developmental Screenings

Eligible Screening Tools*

- Ages and Stages Questionnaire (ASQ) - 4 months to age 5
- Ages and Stages Questionnaire - 3rd Edition (ASQ-3)
- Battelle Developmental Inventory Screening Tool (BDI-ST) - Birth to 95 months
- Bayley Infant Neuro-developmental Screen (BINS) - 3 months to age 2
- Brigance Screens-II - Birth to 90 months
- Child Development Inventory (CDI) - 18 months to age 6
- Infant Development Inventory - Birth to 18 months
- Parents' Evaluation of Developmental Status (PEDS) - Birth to age 8
- Parent's Evaluation of Developmental Status - Developmental Milestones (PEDS-DM)

*Note: the list of eligible screening tools is set forth in the CMS Core Set Measure requirements document and is subject to change



What Does L.A. Care Offer – Members?

Community/Member Education:

- Through the FRC/CRCs:
 - Classes (virtual/in-person) – *Launch Fall 2021*
 - Childhood development topics and available resources
 - Educational materials:
 - Maternal and child health (developmental/behavioral delays)
 - **Help Me Grow** and CDC **Learn the Signs, Act Early** based tools
- For L.A. Care members:
 - Newsletters, social media, brochures, flyers,
 - L.A. Care website/member portal

Questions?

L.A. Care Program Contact

Cathy Mechsner *Manager, HIT Programs*
Quality Improvement – Practice Transformation

Cell: 213.220.7547

Email: cmechsner@lacare.org