

★ Medicare Star Program

Osteoporosis Management in Women Who Had a Fracture (OMW)



Q: Which members are included in the sample?

A: Women 67-85 years of age who suffered a fracture (7/1/2015 - 6/30/2016), and who had either a bone mineral density (BMD) test or prescription for a drug to treat osteoporosis in the six months after the fracture.

Q: What codes are used?

A: Please reference attached sample codes and Value Set Directory for additional codes

Q: What documentation is needed in the medical record?

A: None. This measure requires **claim/encounter data** submission only using the appropriate Value Set Codes.

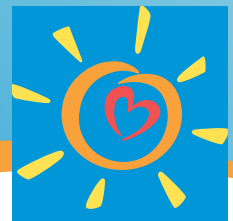
Q: What type of document is acceptable?

- A:** Evidence of claims/encounter data
- BMD (bone mineral density) test, in any setting, on the IESD or in the 180-day (6 month) period after the IESD. If IESD was an inpatient, a BMD test during inpatient stay.
 - Osteoporosis therapy on the IESD or in the 180-day (6 month) period after IESD. If the IESD was an inpatient, long-acting osteoporosis therapy during the inpatient stay.
 - A dispensed prescription to treat osteoporosis on the IESD or in the 180-day (6 month) period after IESD
 - A dispensed prescription to treat osteoporosis
 - Fracture
 - Visit type

Osteoporosis Therapies:

Description	Prescription
Biphosphonates	<ul style="list-style-type: none"> • Alendronate • Alendronate-cholecalciferol • Ibandronate • Risedronate • Zoledronic acid
Other agents	<ul style="list-style-type: none"> • Calcitonin • Denosumab • Raloxifene • Teriparatide

★ Medicare Star Program Osteoporosis Management in Women Who Had a Fracture (OMW)



L.A. Care
HEALTH PLAN®

Q: How to improve score for this HEDIS measure?

A:

- ☑ Use of complete and accurate Value Set Codes
- ☑ Timely submission of claims and encounter data
- ☑ Ensure proper documentation in medical record
- ☑ **Required Exclusions:**
 - Members who had a BMD test during the 730 days (24 months) prior to IESD*
 - Members who had a claim/encounter for osteoporosis therapy during the 365 days (12 months) prior to IESD*
 - Member who received a dispensed prescription or had an active prescription to treat osteoporosis during the 365 days (12 months) prior to IESD*
 - *IESD: Index Episode Start Date [The earliest date of service for any encounter during the Intake Period (7/1/15 – 6/30/16) with a diagnosis of fracture]

Note: *Fractures of finger, toe, face and skull are not included.*

★ Medicare Star Program
**Osteoporosis Management in
 Women Who Had a Fracture (OMW)**



SAMPLE CODES

The codes listed below are not inclusive and do not represent a complete list of codes found in the NCQA HEDIS® Value Set. To ensure accurate documentation, please refer to the HEDIS® 2017 Value Set Directory located on the L.A. Care Website at:

<http://www.lacare.org/providers/provider-resources/hedis-resources>

ICD-10 codes	
Refer to Fractures Value Set	

CPT codes	
Bone Mineral Density Tests	76977, 77078, 77080, 77081, 77082, 77085
Fractures	Refer to Fractures Value Set
Observation	99217-99220
Outpatient	99201-99205, 99211-99215, 99241-99245, 99341-99345, 99347-99350, 99381-99387, 99391-99397, 99401-99404, 99411, 99412, 99420, 99429, 99455, 99456
ED	99281-99285

HCPCS codes	
Bone Mineral Density Test	G0130
Fractures	S2360
Long-Acting Osteoporosis Medications	J0897, J1740, J3487-J3489, Q2051

★ Medicare Star Program
Osteoporosis Management in
Women Who Had a Fracture (OMW)



L.A. Care
HEALTH PLAN®

HCPCS codes

Osteoporosis Medications	J0630, J0897, J1740, J3110, J3487-J3489, Q2051,
Outpatient	G0402, G0438, G0439, G0463, T1015

Exclusion codes

Refer to Bone Mineral Density Tests Value Set, Osteoporosis Medications Value Set