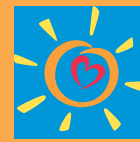


# Clinical Practice and Preventive Health Guidelines

Adopted by L.A. Care



**L.A. Care**  
HEALTH PLAN®

L.A. Care systematically reviews and adopts evidence-based Clinical Practice and Preventive Health Guidelines promulgated from peer reviewed sources and from organizations like the National Guideline Clearinghouse and U.S. Preventive Services Task Force. Guidelines for diseases and health conditions identified as most salient to L.A. Care members for the provision of preventive, acute or chronic medical and behavioral health services are regularly reviewed by L.A. Care's Joint 'Performance Improvement Collaborative Committee' and 'Physician Quality Committee' to help improve the delivery of health care services to members. The most current list of Clinical Practice and Preventive Health Guidelines adopted by L.A. Care is available for download from the link below.



For hard copies please call Provider Relations at: **213-694-1250**, Ext. 4719.



<http://www.lacare.org/providers/provider-resources/clinical-practice-guidelines>




## Clinical Practice Guidelines



### GENERAL GUIDELINES

The National Guideline Clearinghouse is a public resource for evidence-based clinical practice guidelines and is an initiative of the Agency for Healthcare Research and Quality. Visit the National Guideline Clearinghouse at <http://www.guideline.gov>

### BEHAVIORAL HEALTH

- ▶ Attention Deficit Hyperactivity Disorder (ADHD): Clinical Practice Guideline for the Diagnosis, Evaluation, and Treatment of ADHD in Children and Adolescents. American Academy of Pediatrics (2011). 
- ▶ Practice Guideline for the Treatment of Patients with Major Depressive Disorder. Third Edition. American Psychiatric Association (2010). 
- ▶ The National Practice Guideline for the Use of Medications in the Treatment of Addiction Involving Opioid Use. American Society of Addiction Medicine (2015). 



## CARDIOVASCULAR



- ▶ 2013 ACC/AHA Guideline on the Assessment of Cardiovascular Risk: A Report of the ACC/AHA Task Force on Practice Guidelines. ACC/AHA (2013). [🔗](#)
- ▶ 2013 ACC/AHA Guideline on the Treatment of Blood Cholesterol to Reduce Atherosclerotic Cardiovascular Risk in Adults. ACC/AHA (2013). [🔗](#)
- ▶ 2014 Evidence-Based Guideline for the Management of High Blood Pressure in Adults: Report from the Panel Members Appointed to the Eighth Joint National Committee (JNC). JNC (2014). [🔗](#)

## ENDOCRINE



- ▶ Standards of Medical Care in Diabetes – 2016. American Diabetes Association (ADA) (2016). [🔗](#)
- ▶ Comprehensive Diabetes Management Algorithm 2016. American Association of Clinical Endocrinologists (AACE) and the American College of Endocrinology (ACE) (2016). [🔗](#)

## INFECTIOUS DISEASES



- ▶ Sexually Transmitted Diseases Treatment Guidelines, 2015. Centers for Disease Control and Prevention (2015). [🔗](#)
- ▶ Adult and Pediatric Acute Infection Guideline Summary. California Medical Association Foundation (2014-2015). [🔗](#) [🔗](#)



## OTITIS MEDIA

- ▶ The Diagnosis and Management of Acute Otitis Media. American Academy of Pediatrics (2013). [🔗](#)

## PAIN



- ▶ Assessment and Management of Chronic Pain. Institute for Clinical Systems Improvement (2013).
- ▶ CDC Guideline for Prescribing Opioids for Chronic Pain - United States, 2016. [🔗](#)
- ▶ Diagnosis and Treatment of Low Back Pain: A Joint Clinical Practice Guideline from the American College of Physicians and the American Pain Society. Annals of Internal Medicine (2007). [🔗](#)
- ▶ Diagnostic Imaging for Low Back Pain: Advice for High-value Health Care from the American College of Physicians. Annals of Internal Medicine (2011). [🔗](#)

## OBSTETRICS AND PERINATAL



- ▶ Guidelines for Perinatal Care, 7th Edition. American Academy of Pediatrics Committee on Fetus and Newborn and American College of Obstetricians and Gynecologists (2012). [🔗](#)
- ▶ Safe Prevention of the Primary Cesarean Delivery. American College of Obstetricians and Gynecologists (2014). [🔗](#)
- ▶ Smoking Cessation during Pregnancy. The American Congress of Obstetricians and Gynecologists (2010). [🔗](#)
- ▶ Procedures to Prevent Perinatal Hepatitis B Virus Transmission. Centers for Disease Control and Prevention (2016). [🔗](#) [🔗](#)

## RESPIRATORY



- ▶ Guidelines for the Diagnosis and Management of Asthma (EPR-3). National Heart Lung and Blood Institute, & National Institutes of Health (2007). [🔗](#)
- ▶ Prevention of Acute Exacerbations of Chronic Obstructive Pulmonary Disease (COPD): American College of Chest Physicians and Canadian Thoracic Society Guideline (2015). [🔗](#)
- ▶ Diagnosis and Management of Stable Chronic Obstructive Pulmonary Disease: A Clinical Practice Guideline Update from the American College of Physicians, American College of Chest Physicians, American Thoracic Society, and European Respiratory Society. Annals of Internal Medicine (2011). [🔗](#)

## ADDITIONAL STANDARDS OF CARE



- ▶ Standards of Care for the Health of Transsexual, Transgender, and Gender-nonconforming People, V7. International Journal of Transgenderism (2012). [🔗](#)
- ▶ International Guidelines for Management of Severe Sepsis and Septic Shock. Society of Critical Care Medicine (2012). [🔗](#)
- ▶ Treating Tobacco Use and Dependence: 2008 Update. U.S. Department of Health and Human Services (2008). [🔗](#)

# Preventive Health Guidelines

## AGES 0-18 YEARS

Children need to be seen according to the American Academy of Pediatrics (AAP) Periodicity Schedule. Medi-Cal managed care providers need to conduct all screenings required by the Child Health and Disability Program (CHDP) Periodicity Schedule.



- ▶ Recommendations for Preventive Pediatric Health Care, 2015. American Academy of Pediatrics (AAP) (2015). [🔗](#)
- ▶ U.S. Preventive Services Task Force (USPSTF) Recommendations for Children and Adolescents. [🔗](#)
- ▶ Recommended Immunization Schedule for Persons Aged 0 Through 18 years. United States – 2016. CDC (2016). [🔗](#)
- ▶ Child Health and Disability Prevention (CHDP) Periodicity Schedule for 'Health Assessment Requirements by Age Groups – 2012', and 'Dental Referral by Age – 2011'. California Department of Health Care Services (2011 and 2012). [🔗](#)

## AGES 19 AND OLDER



- ▶ U.S. Preventive Services Task Force (USPSTF) A and B Grade Recommendations. [🔗](#) [🔗](#)
- ▶ Centers for Medicare and Medicaid Services (CMS) Prevention and Immunizations. [🔗](#) [🔗](#)
- ▶ Recommended Adult Immunization Schedule. United States – 2016. CDC (2016). [🔗](#)